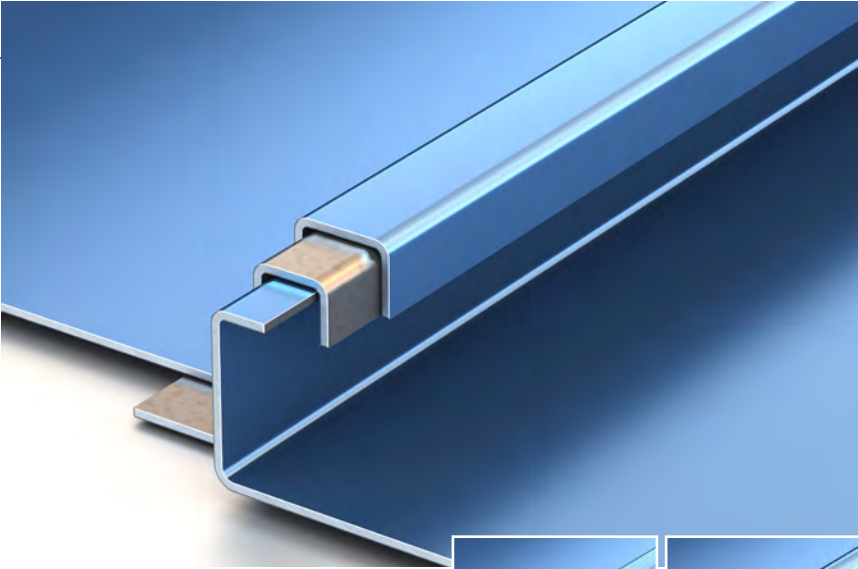




# TSM 100SS Profile

*Our Shop is Your Shop!*

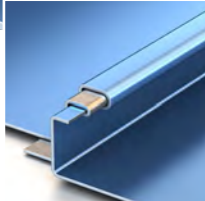
Quality materials and more than 100 years of successful design application govern the construction of our TSM 100SS 1" mechanically seamed metal roof system. Ideal for light commercial or residential applications, this smartly detailed profile can be curved for enhanced architectural appeal. Installed as full-length panels with no end laps helps provide the ultimate in all-weather and watertight protection curved installations.



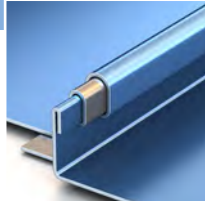
*Ideal Application:*

*Commercial*

*Residential*



Single lock panel



Double lock panel



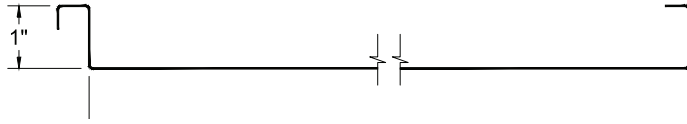
# TSM 100SS Profile



## Available widths:

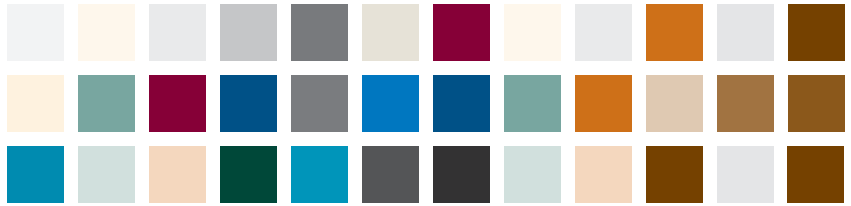
12" - 21"\*

\*TriState Metals design pressures, wind uplifts and test reports are for specific deck attachments, material gauges, clip spacing and panel widths. A complete specification and listing is available online at [www.tsmny.com](http://www.tsmny.com)



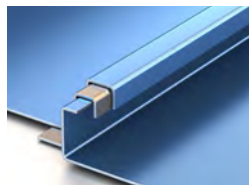
## Substrates available:

- Galvalume® – 24ga and 26ga
- Drexlume® – 24ga and 26ga
- Aluminum – .032"
- Copper – 16 oz and lead-coated copper
- Zinc

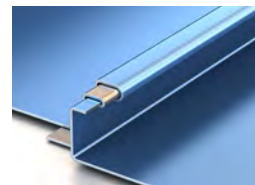


## Profile Options:

- Single lock panel
- Double lock panel
- Radius panel (single or double lock)



Unseamed panel



Single lock panel



Double lock panel

## Finishes and product warranty:

Available in a variety of coatings and colors by Valspar. See the TriState Metals color card for standard colors and paint specifications.



Galvalume® Substrate: High-performance painted metal roofing product, carefully tensioned leveled for superior flatness.

**35 YEAR WARRANTY**  
35-Year Non Pro-rated PVDF Paint Warranty

Aluminum Substrate: High-performance painted metal roofing product, carefully tensioned leveled for superior flatness.

**35 YEAR WARRANTY**  
35-Year Non Pro-rated PVDF Paint Warranty

Drexlume® Substrate: Mill finished Galvalume® with a two-sided, clear acrylic finish.

**25 YEAR WARRANTY**  
25-Year Non Pro-rated Drexlume Warranty (Acrylic Coated Galvalume)

## Production options:

Factory made or field rolled to exact lengths  
Optional: striation, beads, pencil ribs

## Installation:

Can be installed over plywood decking and Drexel Metals MetShield® underlayment.



## Slope:

Minimum slope 2:12



Minimum Roof Pitch:  
2:12 – low roof pitch

## Testing:

In accordance with:



- UL 580 Wind Uplift (Class 90)
- UL 2218 Class 4 Hail Impact

- UL 790 Class A Fire Rating
- UL Environmental – SRI Third Party Verified



41 North Lawn Ave., Elmsford, NY 10523  
Ph: 914-347-8157 • Fax: 914-347-8191  
email: [sales@tsmny.com](mailto:sales@tsmny.com)  
[www.tsmny.com](http://www.tsmny.com)

